

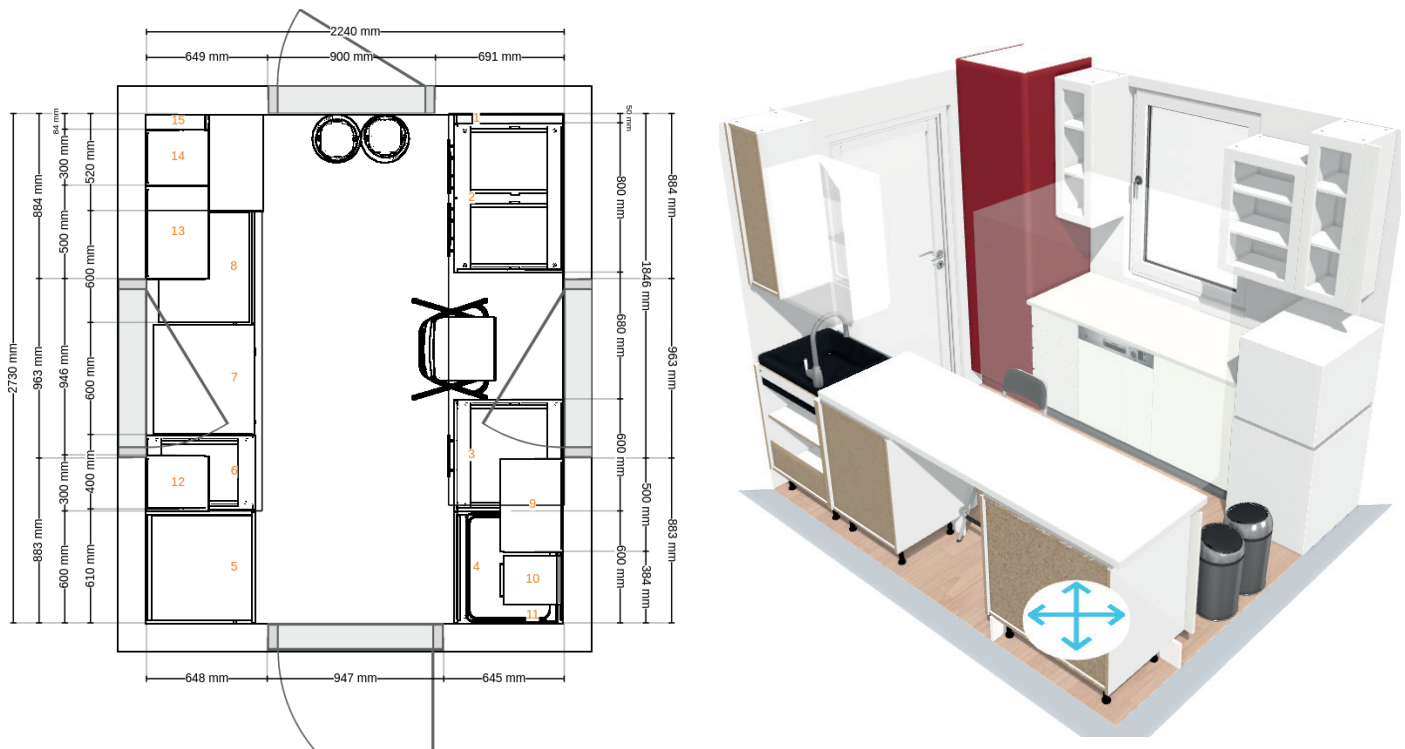
SoMoCoRAD PROJECT

Mobile solution for the radiological monitoring of workers



Through its personalised guidance and recognised industrial experience, IRE Lab is your best choice for advice and tailor-made solutions for radioactivity analysis and monitoring.

The module dedicated to in-vitro analysis in laboratories is equipped with all the necessary equipment to perform urine and mucus analysis, including H-3, C-14, and Sr-90 as well as the possibility to add a gamma spectrometry chain in option.



Example of a layout of mobile facility for in-vitro monitoring of workers

The first module can be operated by 1 person generally from the medical staff trained to use the whole-body counter. The second module has to be operated by 1 or 2 technicians trained to the relevant analytical methods.

Thanks to the project, IRE Lab designed a mobile facility for the radiological monitoring of workers under both operational and accidental conditions. IRE Lab is now able to develop either a module dedicated to in-vivo monitoring or a specific module for in-vitro analysis or a combination of both and to make them available to the interested operators. Do not hesitate to contact us to define the solution adapted to your needs and your budget.

Need more information?

Contact Thomas Ost, project manager at IRE Lab: Thomas.Ost@ire.eu

The National Institute for Radioelements (IRE) and its IRE ELiT subsidiary give priority to promoting the beneficial use of radioisotopes for medical applications while ensuring the absence of harmfulness. For IRE Lab, this priority translates into its provision of advice and personalised solutions in the radioactivity measurement and monitoring sector.

Thanks to its multidisciplinary team and its long experience working for IRE, world leader in the production of medical radioisotopes, IRE Lab offers a range of tailor-made, tried and tested solutions in the following fields:

- Analysis of radioactivity in various different samples
- Radiological characterisation of waste, effluent and contaminated objects
- Development of continuous radioactivity sampling and monitoring equipment
- Carrying out projects at national and international level in its areas of competence.



GET IN TOUCH!

IRE Lab

Avenue de l'Espérance, 1
6220 Fleurus - Belgique

Tel. : 071/82 95 56

Mail : irelab@ire.eu

www.ire.eu

Follow us on LinkedIn 